



Effective Guidance of Course Memberships: The Enrollment Manager



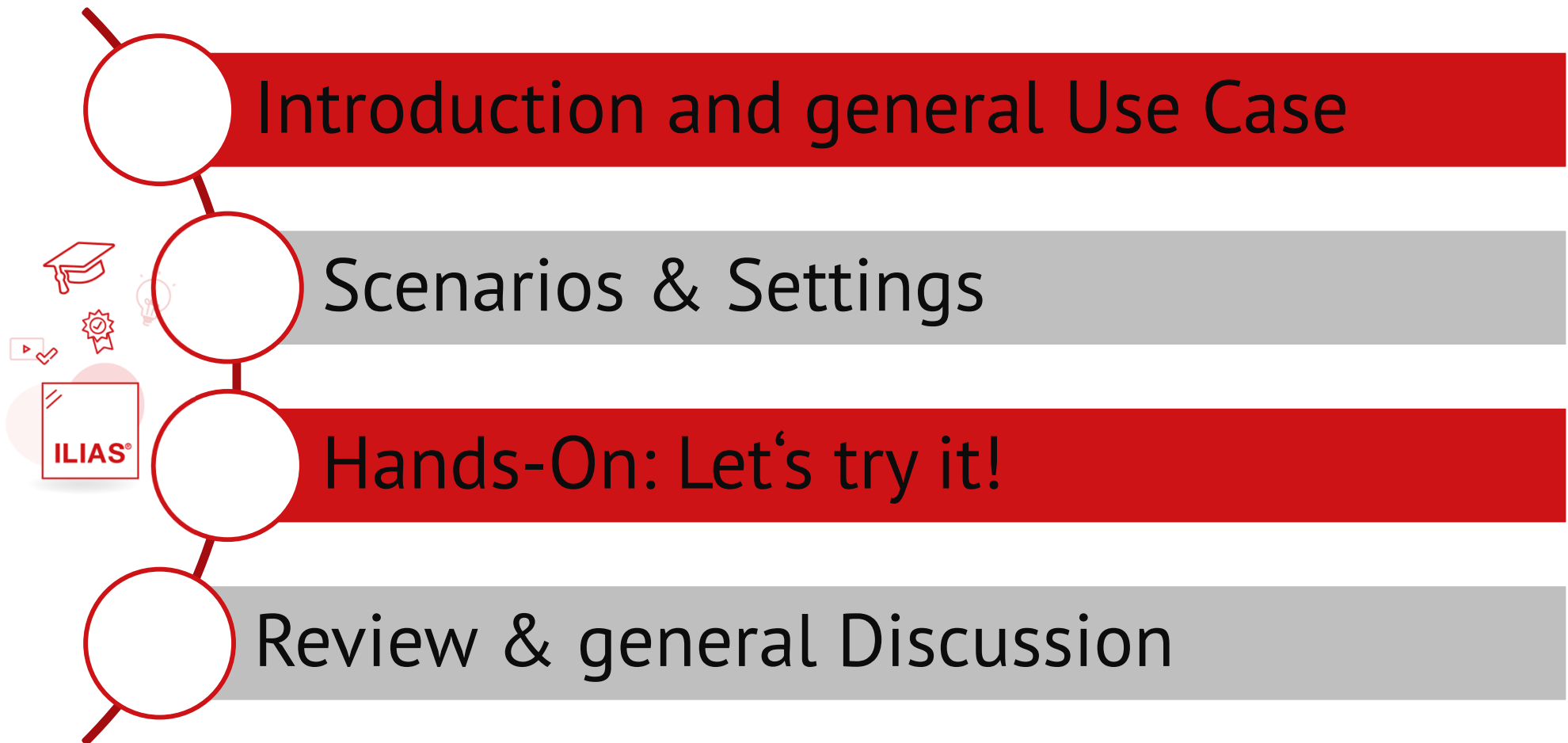
Dr. Sebastian van Loo
svanloo@databay.de



Alexander Gura
agura@databay.de

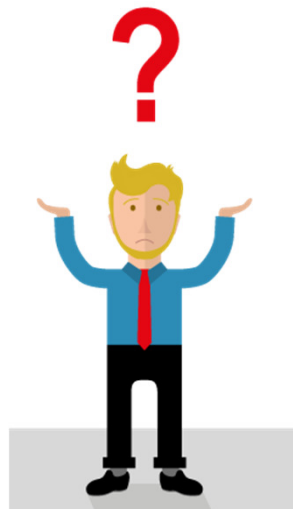


Outline



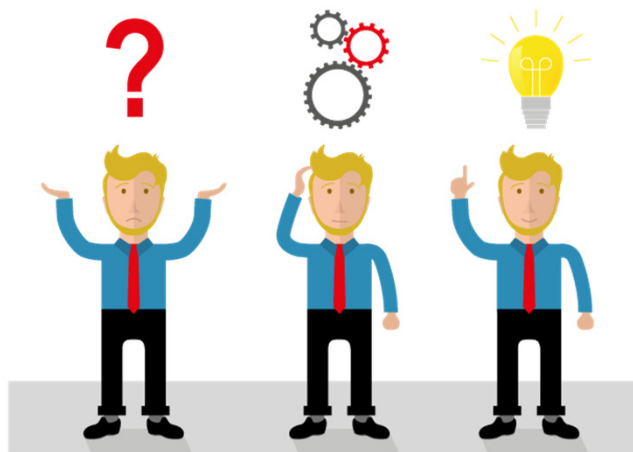
Introduction and general Use Case

- “It is time-consuming and tedious to assign new and remove course memberships.”
- “I don’t want to update course memberships on a weekly basis manually, but I need to control the course memberships.”
- “I wish I could create some kind of automatic logic, to assign these courses.”



Introduction and general Use Case

- The core functionality of this cron-hook plugin: assist institutions, companies and universities to enroll and remove users in any given ILIAS courses.
- Any criteria can be set and combined in the plugin UI to assign courses (rule).
- The rules can easily be created, deleted or changed at any time.

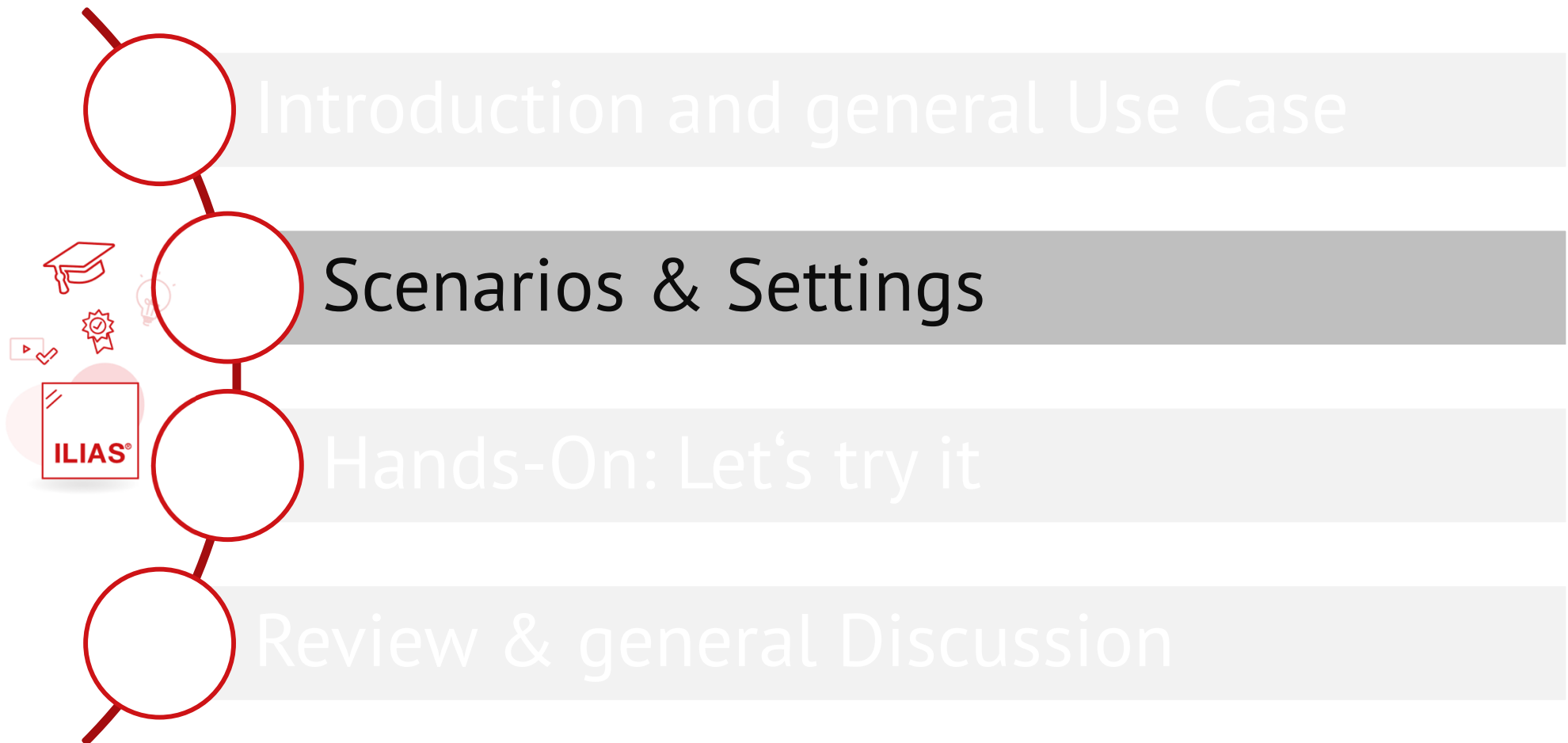


Introduction and general Use Case

- Companies and Institutions:
 - All employees who have joined the company in 2024 should take part in the course “Onboarding 2024”.
 - Enroll all employees of the Production Department into the courses „Infection Protection“ and „Work Safety“.
- Student Administration:
 - Enroll the Mathematics Bachelorstudents to all courses in the category „Numerical Analysis“



Outline



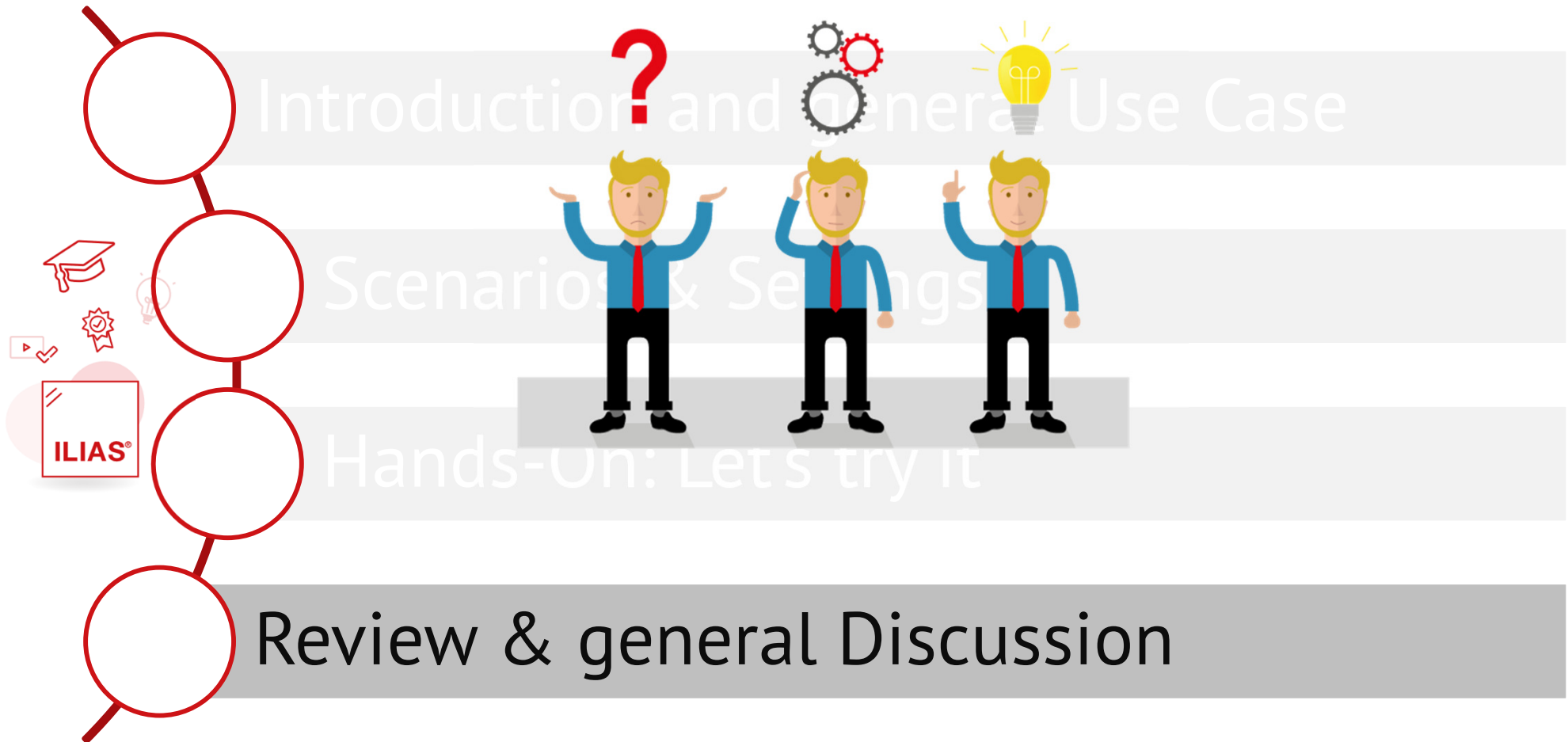
Hands-On: Let's try it!

Possible criteria:

- Global Role “Enrollment”
- Course Membership: “EnrollmentDemo”
- Gender: m/f Titel: Dr.
- Maildomain: @ILIAS2024.com / @ILIAS2024.at / @ILIAS2024.de
- Institution: ILIAS University / ILIAS Corporate /ILIAS Institution
- Department: One / Two / Three
- City: Graz / Cologne / Aachen



Outline





Thank you for your participation!